



Civil Service

# *Live Online*

**Innovative Solutions to tackle  
Criminal Exploitation**

**Civil Service Live Online**

**14 and 15 July 2020**

*A Brilliant  
Civil Service*

**#CivilServiceLive  
@UKCivilService**



Civil Service

# Live Online

**Detective Chief Inspector Stuart Liddell**  
**Detective Inspector Duncan Evans**

**National County Lines Coordination Centre**



*A Brilliant  
Civil Service*

**#CivilServiceLive**  
**@UKCivilService**



Civil Service

# Live Online

*A Brilliant  
Civil Service*

## Aims and Objectives

- Explain County Lines
- Provide National overview and the Centre's role
- Methodology and warning signs – how you can help



**#CivilServiceLive  
@UKCivilService**



Civil Service

*Live Online*

*A Brilliant  
Civil Service*

## What is County Lines?

County Lines is a term used to describe gangs or organised criminal networks involved in exporting illegal drugs in to one or more importing areas (within the UK), using dedicated mobile phone lines or other form of 'deal line'.

They are likely to exploit children and vulnerable adults to move (and store) the drugs and money and they will often use coercion, intimidation, violence (including sexual violence) and weapons.

There are over 3,200 lines operational in the UK.

**#CivilServiceLive  
@UKCivilService**

## National Overview

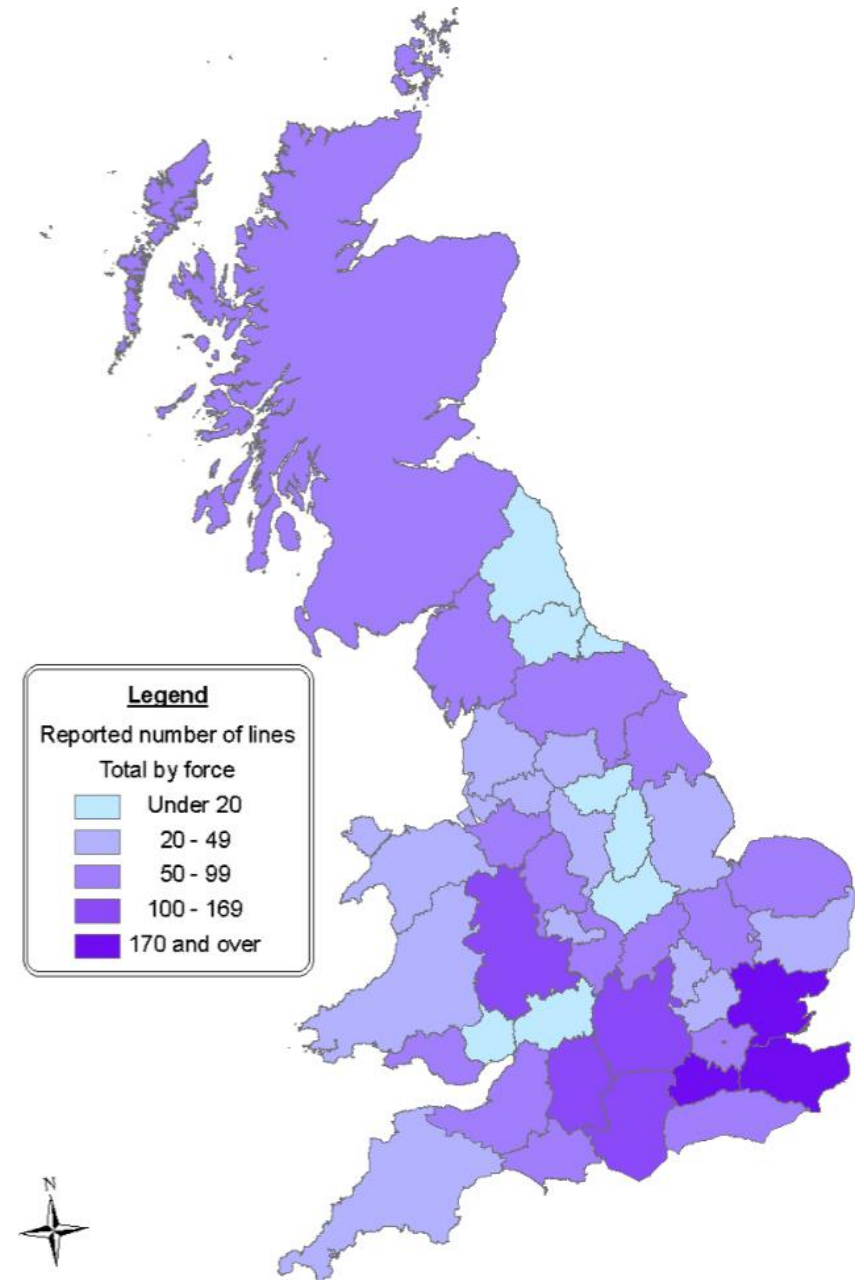
**In excess of 3,200** suspected county lines deal lines reported as operational in 2019

**London, West Mids, Merseyside, GMP and West Yorkshire** key exporters across UK. In total, 33 forces reported as exporting at least 1 line in this period

Approximately **10,000 individuals** reported as linked to CL between Sept '18 and August '19

Links CL **directly and indirectly to violence**, and increase in presence of knives. Limited reporting on firearms discharges outside of metropolitan areas

Exploitation remains critical component of CL business model



## National Overview

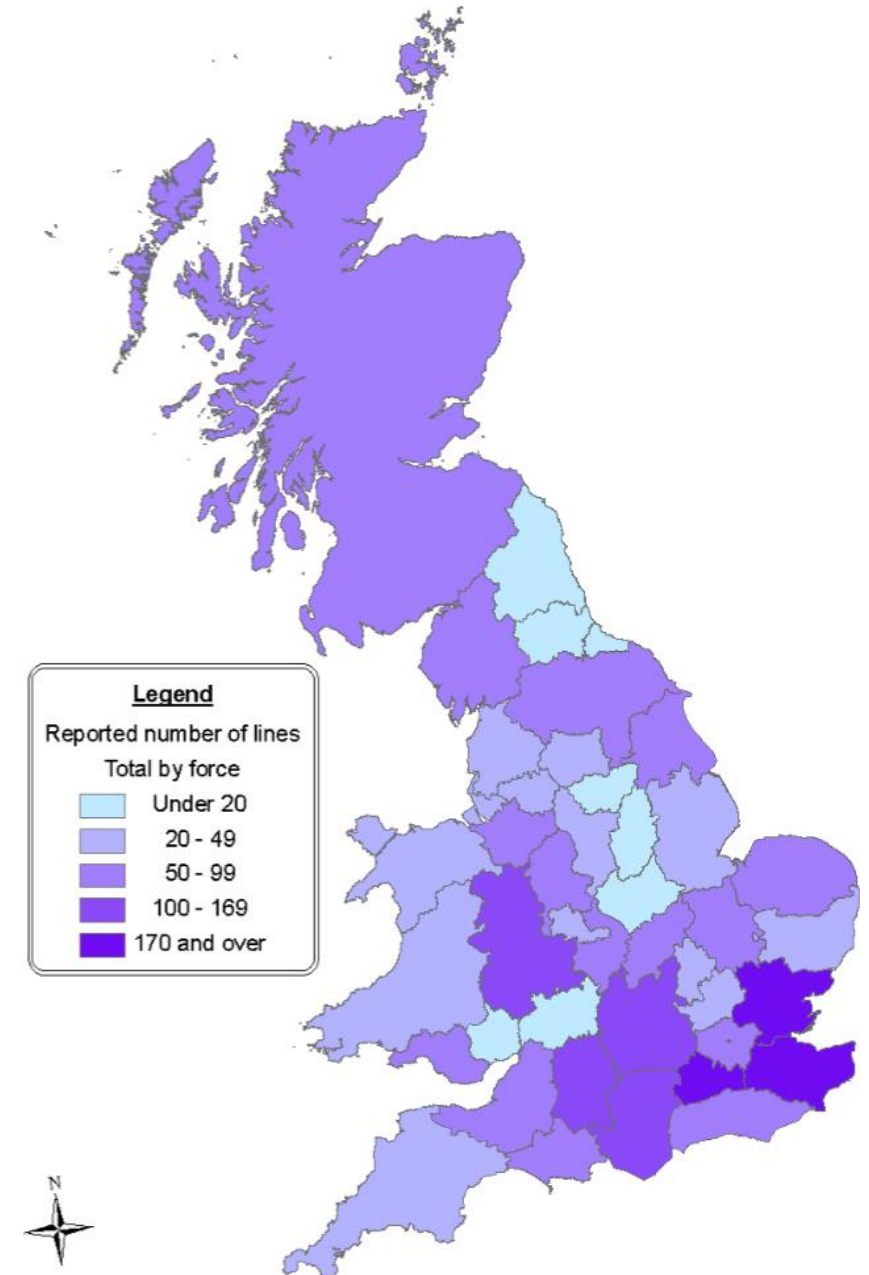
Principal commodity remains **Crack Cocaine and Heroin**. CL model changing the markets and driving new demand

**1,100 mapped OCGM** nominals also reported to NCLCC for CL activity

**Extremely successful criminal business operating model:** minimum estimated annual turnover of £750m-£500m per annum

**Rail network remains a key method of gaining access to markets**, and moving exploited juveniles. Early signs of shift towards increased use of coach network

Cuckooing increasingly reported as prevalent across forces. There is **no singular effective response to cuckooing**





Civil Service

*A Brilliant  
Civil Service*

*Live Online*

## **NCLCC Areas of Focus**

Exploited  
Children

Movement,  
Transportation  
and Priority  
Locations

Supply, Demand  
and Market  
Saturation

Operational  
Response

**#CivilServiceLive  
@UKCivilService**

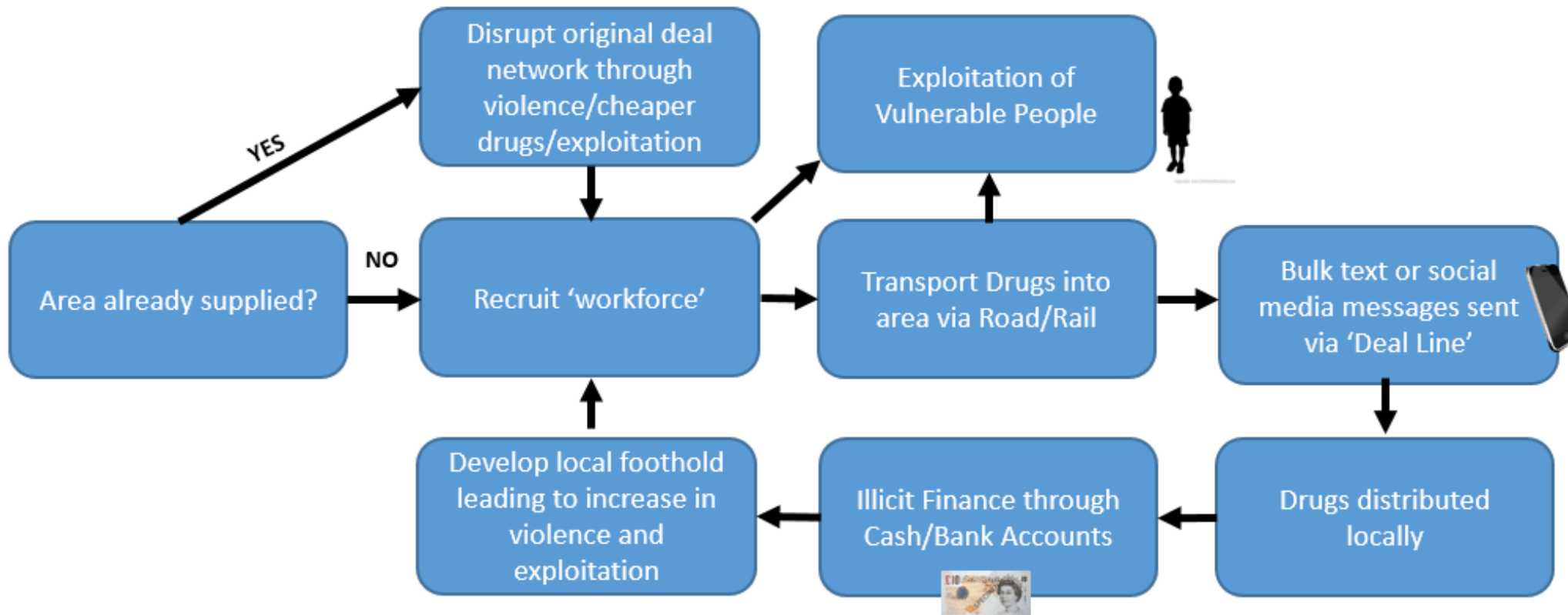


Civil Service

# Live Online

*A Brilliant  
Civil Service*

## A County Line Example







Civil Service

# Live Online

## Cuckooing

- Number of comings and goings – lots of people in the property
- Different accents, unfamiliar people
- Anti-social behaviour, loud noise, excessive parties, nuisance, disturbances

*A Brilliant  
Civil Service*



**#CivilServiceLive  
@UKCivilService**



Civil Service

# Live Online

*A Brilliant  
Civil Service*

## **How does this work contribute to helping us become A Brilliant Civil Service?**

- Joint approach with law enforcement
- Informed and vigilant staff
- Safeguarding the vulnerable

**#CivilServiceLive  
@UKCivilService**



Civil Service

# Live Online

*A Brilliant  
Civil Service*

## What do you need to differently following this session?

- Recognise the signs of a County Line Methodology
- Raise Awareness, Report and Take Action
  - National Crime Agency - <https://www.nationalcrimeagency.gov.uk/what-we-do/crime-threats/drug-trafficking/county-lines>
- Register with the County Lines Knowledge Hub page
  - <https://knowledgehub.group/group/county-lines/group-home>

**#CivilServiceLive  
@UKCivilService**